

# OneWrapPlus

Pre-Stretch >>>> Productivity >>>> Robustness >>>>

## DATASHEET

SAFE • STRONG • SIMPLE

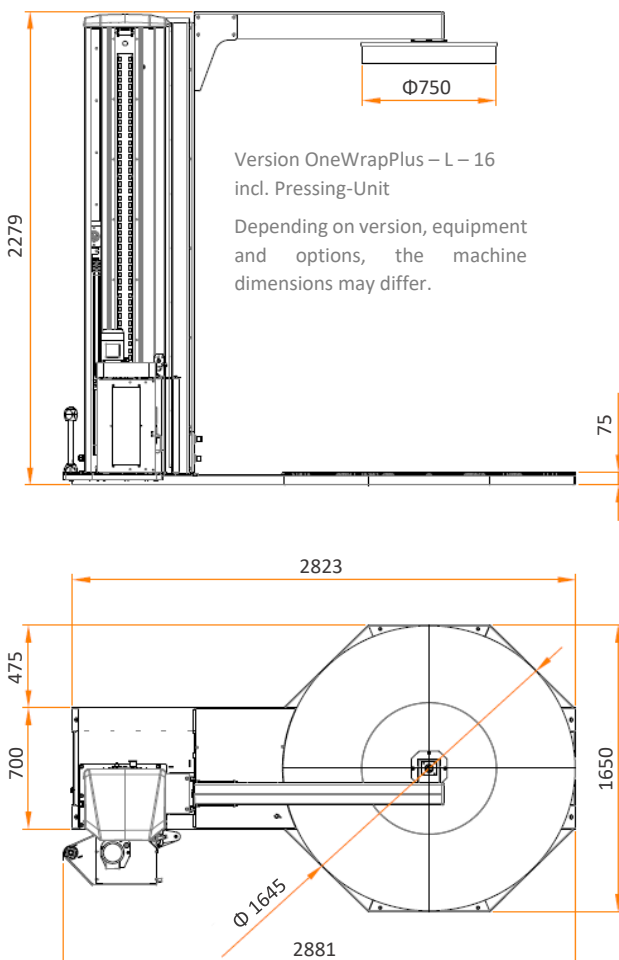
### Semi-Automatic Stretch-Wrapper

**OneWrapPlus** is a semi-automatic machine to wrap palletized loads with stretch film. It provides an additional Plus in options from essential level to moderate level usage. Starting from carriages with basic mechanical brake, up to the motorized 300% Pre-Stretch version: **OneWrapPlus** offers the right solution for most common pallet wrapping needs.

#### KEY FEATURES

- ✓ **Safety First** – OneWrapPlus incorporates several safety features as standard
- ✓ **No film waste** – with motorized Pre-Stretch system & independent tension control
- ✓ **Increased production capacity** – thanks to customized settings
- ✓ **Strong construction** – 2,4T load capacity for less effort in maintenance and flat operating cost
- ✓ **Flexibility** – machine easy to move with forklift (also after installation)
- ✓ **Easy-to-use** – due to the simple control concept
- ✓ **Modular system** – meeting your individual needs
- ✓ **Easy installation** – delivered with hinged column already mounted
- ✓ **CE compliant** - engineered and produced in Italy according to EU safety standards

#### DIMENSIONS



#### YOUR PLUS OPTIONS

- Pre-Stretch up to 300%
- Optional pressing unit
- Pallet Height up to 3000mm
- Open turntable (HS)  $\Phi 1650$ mm
- Motors integrated in column
- Extra robust construction

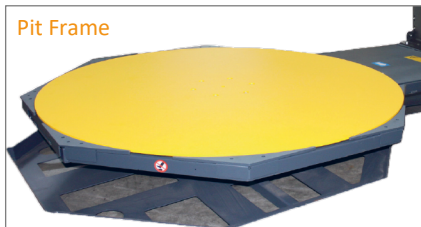
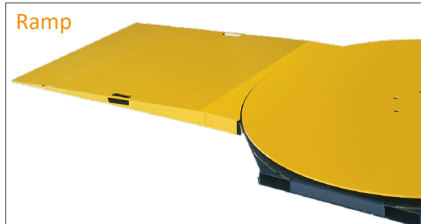


Carriage type	LP	FM	M
Description	Powered Pre-Stretch	Electro-Magnetic Brake	Mechanical Brake incl. quick release
Pre-Stretch level (%)	300 / <b>250</b> / 200 / 150	-	-
Platform diameter (mm)	1.650 std. / 1.800 / 2.200 / 1.650 HS ( <i>open turntable</i> )		
Max. pallet height (mm) <i>incl. overlap above pallet top edge</i>	2.200 std. ( <b>Low</b> ) / 2.600 ( <b>Medium</b> ) / 3.000 ( <b>High</b> )		
Max. pallet size (mm)	1.000 x 1.200 - 1.550 x 1.550 ( <i>depending on turntable diam.</i> )		
Max. working load (kg)	2.400 std. ( <i>flat turntable</i> ) / 1.200 HS ( <i>open turntable</i> )		
Power supply	220/240V 50/60Hz / 400V 50/60Hz / <i>others on request</i>		
Platform rotation speed	6 – 12 rpm ( <i>adjustable</i> )		
Max. noise level	72,0 dB(A)		
Operating temperature	5 – 40°C		
Film roll details (max.)	width 500 mm / ext. Ø 300 mm / core Ø 76mm (fix) / weight 20 kg / thickness up to 35 micron		

Features	LP	FM	M
Manual + 4 Automatic modes	•	•	•
9 + 1 individual programs	•	•	•
Pre-Stretch system	•	-	-
Adjustable film tension <i>from control panel</i>	•	•	-
Smooth Start / Stop	•	•	•
Independent setting of rotation & carriage speeds	•	•	•
Lockable Control Panel	•	•	•
Top-Sheet function	•	•	•
No. of Top- & Bottom windings <i>(independent settable)</i>	•	•	•
Automatic height detection	•	•	•
Top edge overlap <i>(settable from control-panel)</i>	•	•	•
Adjustable bottom overlap	•	•	•
Auto. film break detection	•	-	-
Pausable wrapping cycle	•	•	•

### OPTIONS & ACCESSORIES

- Photocell for dark or reflective surfaces
- Standard ramp; L=1.490mm
- Elongated ramp; L=1.870mm (for loading with pallet truck)
- Pit-frame for installation at ground level
- Film cutting punch (only on LP-carriage)
- Carriage for net-film
- Weighing system with control keyboard
- Low temperature version (-20° C)



### CONTROL PANEL



- User friendly icons and jog selector for quick parameter set-up
- 9 + 1 customizable programs
- Semi-automatic and manual working mode
- Individual Speeds for Up/Down carriage movement
- Separated set-up for top and bottom reinforcement wraps
- Emergency push-button according to regulations

### OPTIONAL PRESSING UNIT



The pressing-unit allows a safe and consistent wrapping of lightweight loads. Independent from used programs and parameter settings.

Air consumption	
Pallet height	NL / cycle
2.200 mm	9
2.600 mm	12
3.000 mm	14

Air pressure: min. 6 bar

### FILM CARRIAGES



### MORE DETAILS

Videos and further information can be found on our website or SIAT Youtube channel.

